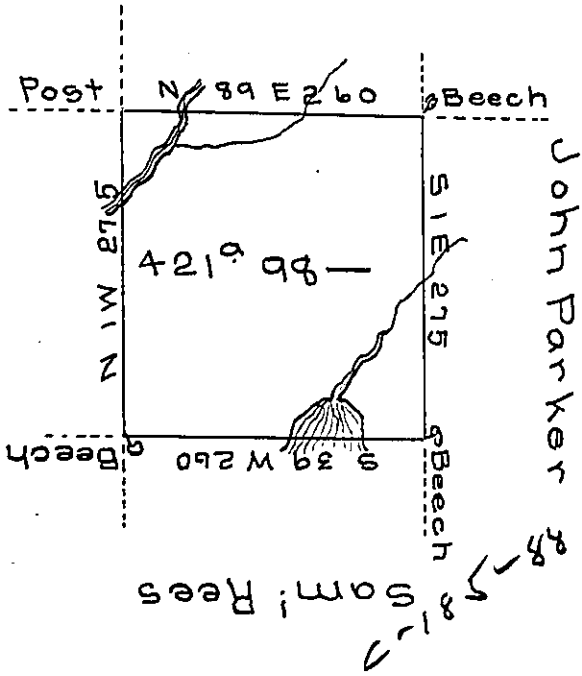


John Gordon

John M^cKissick



John Parker

Saml Rees

In pursuance of a warrant dated December 26th. 1792. Surveyed July 9th. 1793 to Nathan Loofbousrone. the above tract of land situate on a branch of the East Branch of Lechawaxin — in Northampton County containing four hundred and Twenty one acres and ninety eight perches and allowance of Six per cent.

Da^l Brodhead Esq^r
Surveyor Gen^l

Ant^y Crothers D.S.

IN TESTIMONY that the above is a copy of the original remaining on file in the Department of Internal Affairs of Pennsylvania, made conformably to an Act of Assembly approved the 16th day of February, 1833, I have hereunto set my Hand and caused the Seal of said Department to be affixed at Harrisburg, this eleventh day of September 1865

Geo. P. ...
Secretary of Internal Affairs